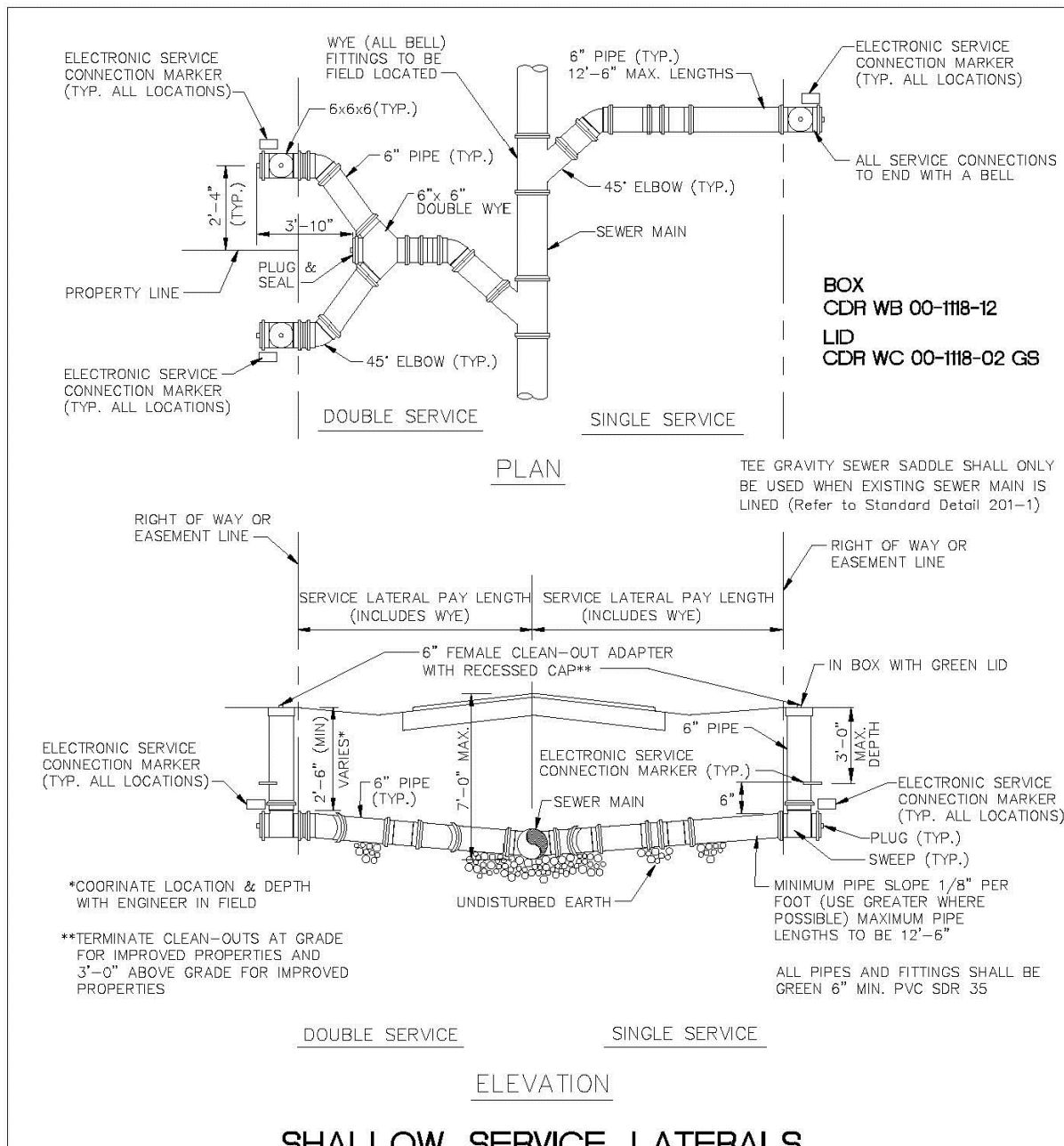
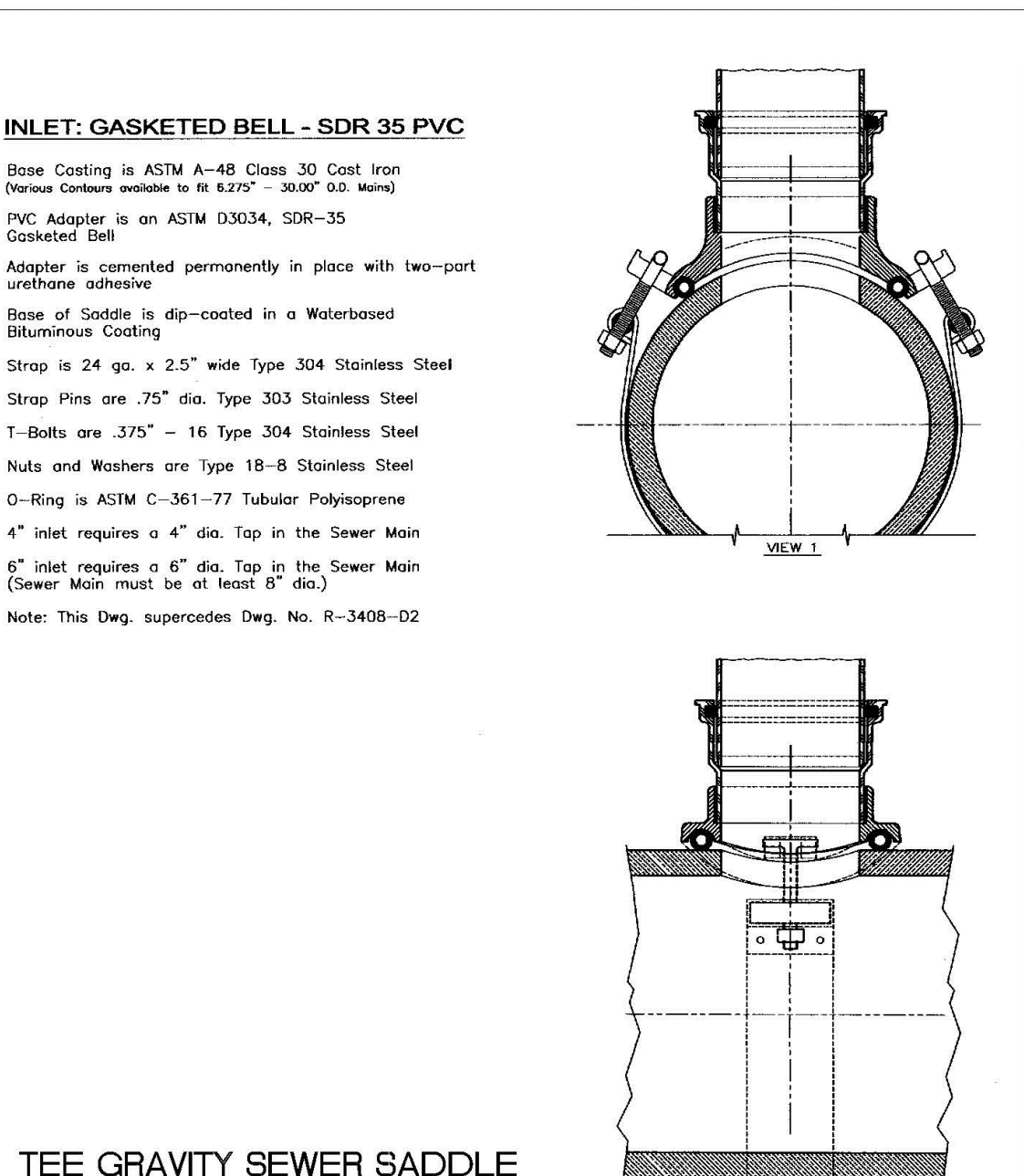


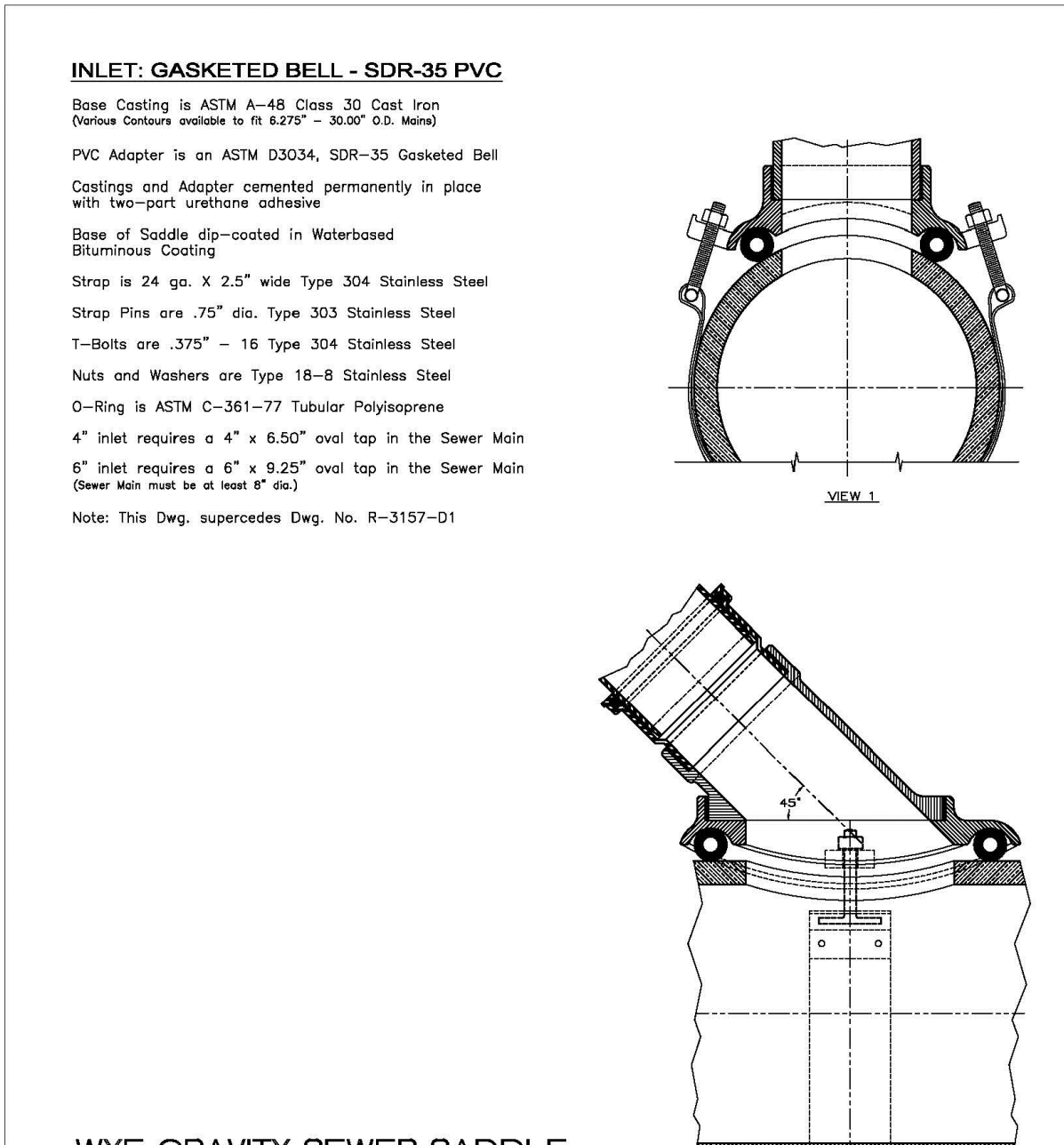
ENGINEERING STANDARDS 2022		
REVISIONS	ENGINEERING DIVISION	SERVICE LATERALS
BY DATE	CITY OF POMPAÑO BEACH	
T.W. 11-2007		DATE: JUNE 2022
S.S. 01/27/12		DWG. NO. 200-1
S.S. 07/10/12	SCALE: N.T.S.	
S.S. 02/05/16		



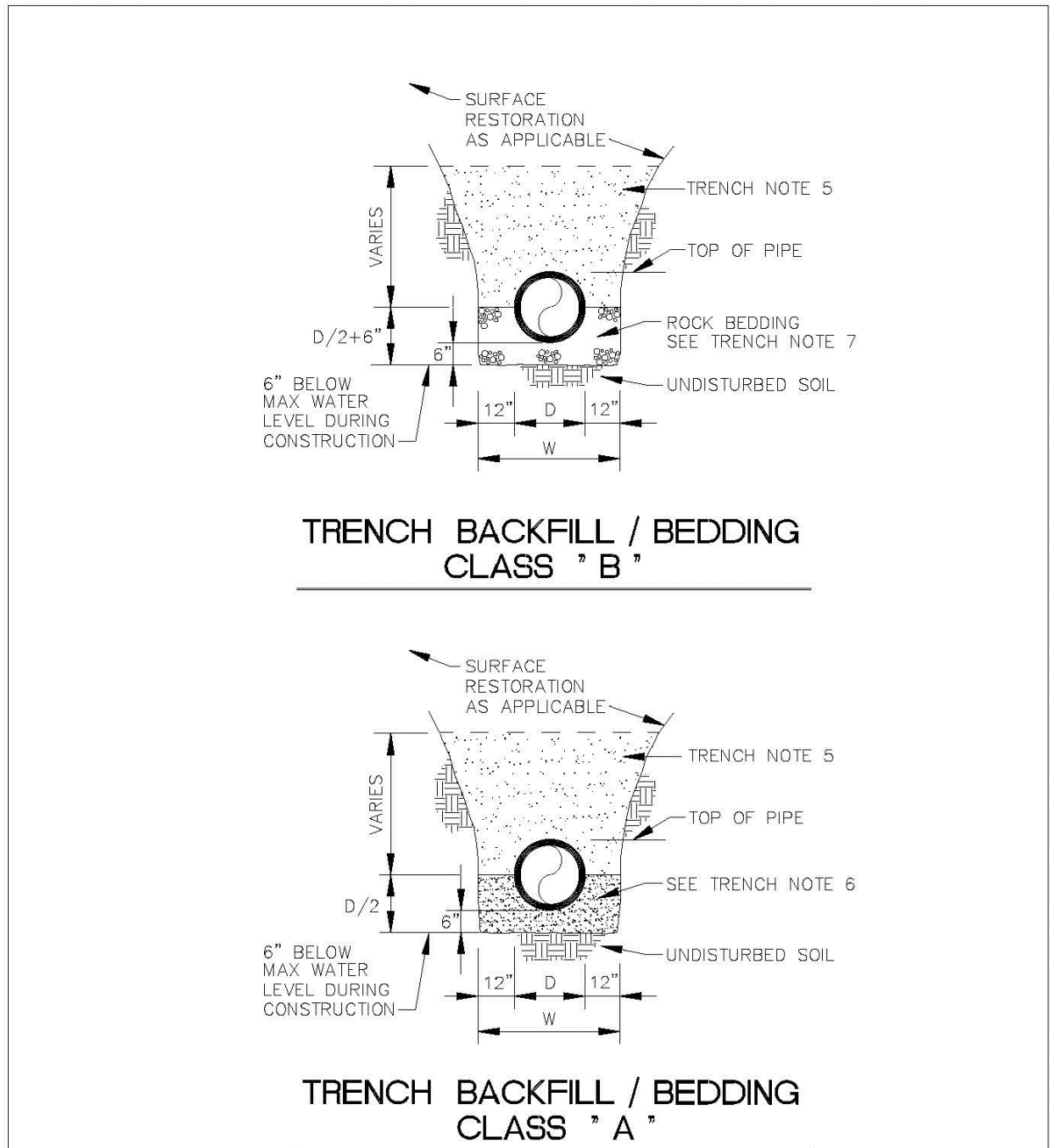
ENGINEERING STANDARDS 2022		
REVISIONS	ENGINEERING DIVISION	SERVICE LATERALS
BY DATE	CITY OF POMPAÑO BEACH	
T.W. 11-2007		DATE: JUNE 2022
S.S. 01/27/12		DWG. NO. 200-2
S.S. 07/10/12	SCALE: N.T.S.	
S.S. 02/10/16		



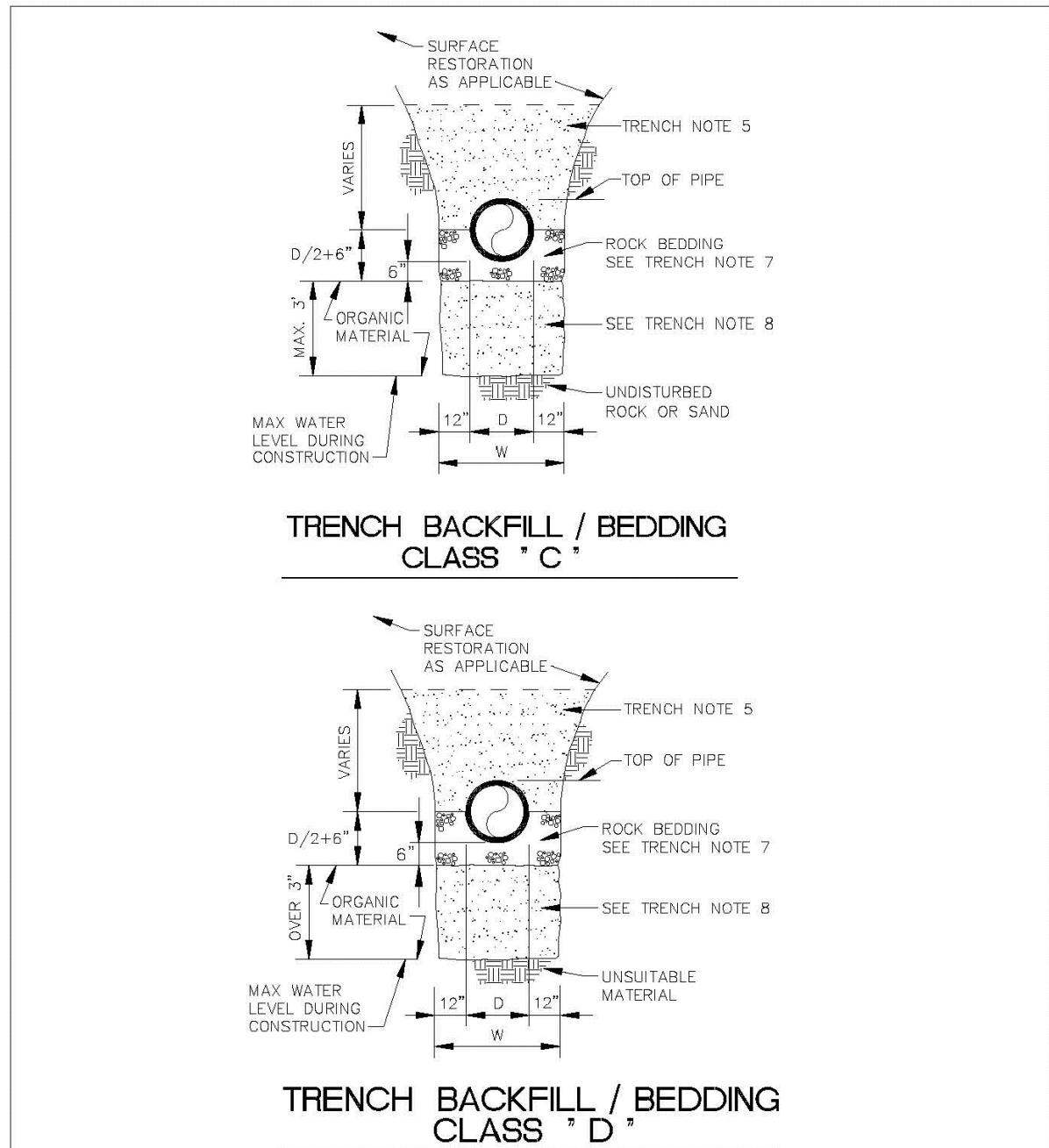
ENGINEERING STANDARDS 2022		
REVISIONS	ENGINEERING DIVISION	TEE GRAVITY SEWER SADDLE
BY DATE	CITY OF POMPAÑO BEACH	
T.W. 11-2007		DATE: MAY 2022
S.S. 01/23/16		DWG. NO. 201-1
	SCALE: N.T.S.	



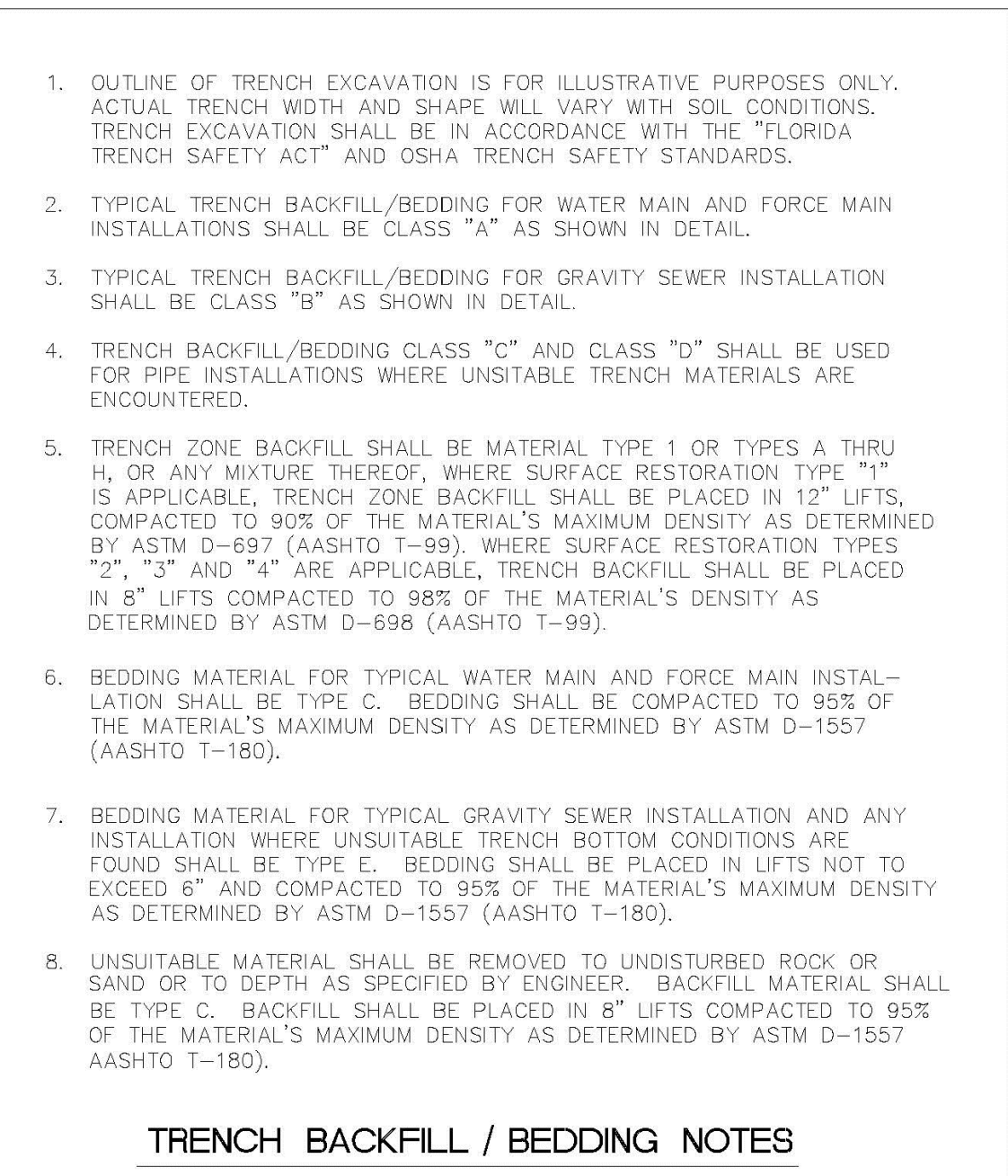
ENGINEERING STANDARDS 2022		
REVISIONS	ENGINEERING DIVISION	WYE GRAVITY SEWER SADDLE
BY DATE	CITY OF POMPAÑO BEACH	
T.W. 11-2007		DATE: MAY 2022
S.S. 01/23/16		DWG. NO. 201-2
	SCALE: N.T.S.	



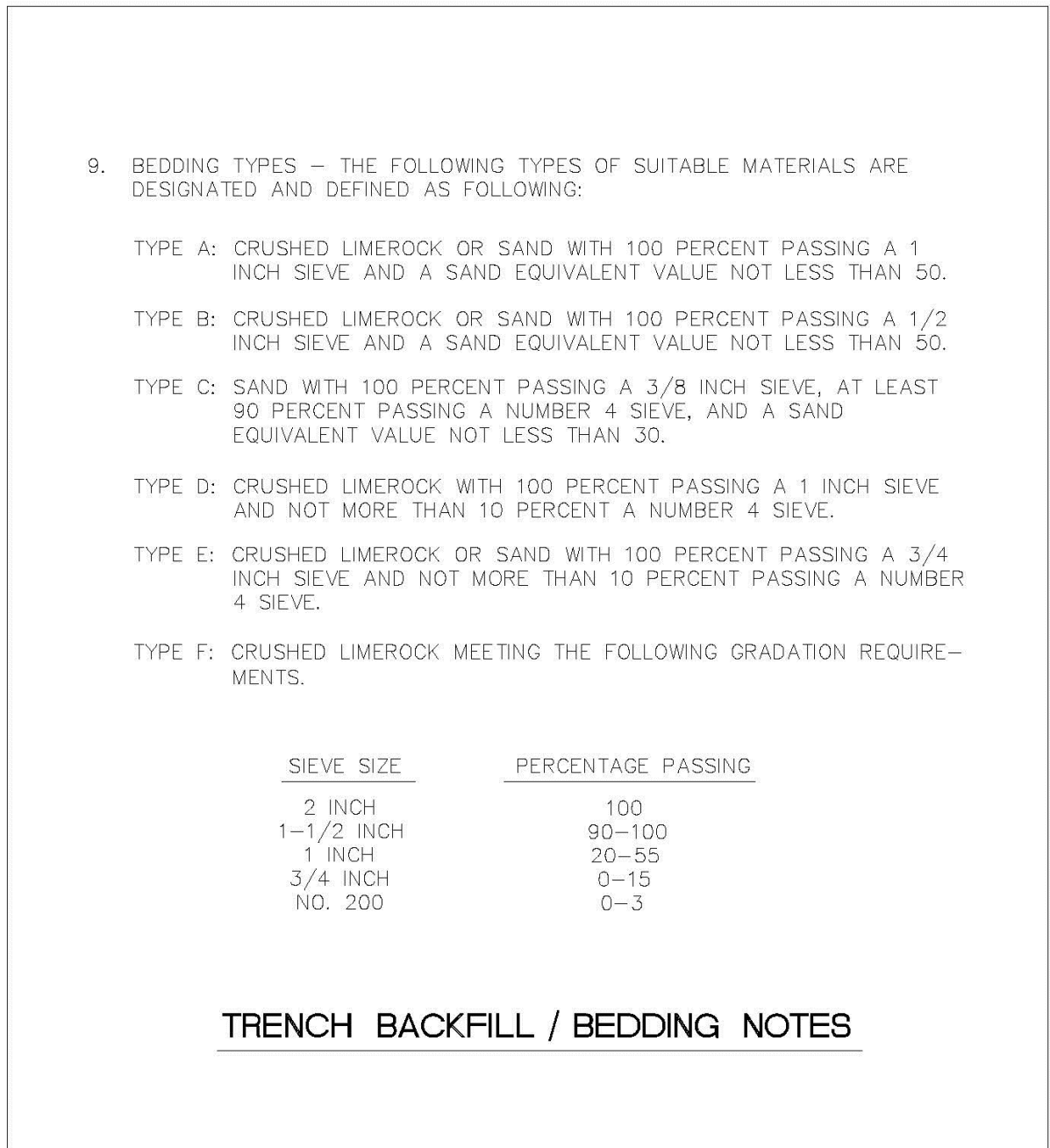
ENGINEERING STANDARDS 2022		
REVISIONS	ENGINEERING DIVISION	TRENCH BACKFILL / BEDDING
BY DATE	CITY OF POMPAÑO BEACH	
T.W. 11-2007		DATE: JUNE 2022
S.S. 01/27/12		DWG. NO. 203-1
S.S. 07/10/12	SCALE: N.T.S.	
S.S. 02/05/16		



ENGINEERING STANDARDS 2022		
REVISIONS	ENGINEERING DIVISION	TRENCH BACKFILL / BEDDING
BY DATE	CITY OF POMPAÑO BEACH	
T.W. 11-2007		DATE: JUNE 2022
S.S. 01/27/12		DWG. NO. 203-2
S.S. 07/10/12	SCALE: N.T.S.	
S.S. 02/10/16		



ENGINEERING STANDARDS 2022		
REVISIONS	ENGINEERING DIVISION	TRENCH BACKFILL / BEDDING
BY DATE	CITY OF POMPAÑO BEACH	
T.W. 11-2007		DATE: JUNE 2022
S.S. 01/23/16		DWG. NO. 203-3
	SCALE: N.T.S.	



ENGINEERING STANDARDS 2022		
REVISIONS	ENGINEERING DIVISION	TRENCH BACKFILL / BEDDING
BY DATE	CITY OF POMPAÑO BEACH	
T.W. 11-2007		DATE: JUNE 2022
S.S. 01/23/16		DWG. NO. 203-4
	SCALE: N.T.S.	

CONEMCO
ENGINEERING, INC.
DBA Conemco Consultants
SBA 8a Civil - Structural - MEP - CEI - Program Management - Land Surveyors

782 NW 42ND AVENUE UNIT 635
MIAMI, FL 33126
MAIN NUMBER 888-536-1536

CA # 29447

JOSE A. COMPRES, P.E.
FLORIDA P.E. LIC. # 65557

CONEMCO ENGINEERING, INC.

PROJECT NAME / ADDRESS:
324 HAUS MIXED USE / NEW BUILDING - CIVIL PLANS
REDESIGN
324 NW 6TH STREET, POMPAÑO BEACH, FL 33060

CLIENT/TOWNER:
AUSTIN FOX ARCHITECTURE
1754 E COMMERCIAL BLVD, FORT LAUDERDALE, FL 33334

REVISIONS	DATE

DATE:	9/12/2025
SCALE:	AS SHOWN
DRAWN:	FP
CHECKED:	PS
APPVD:	JC
PROJECT ID:	FPV-C251004
CONTRACT NO:	-

SHEET NAME:
SANITARY SEWER DETAILS

PZD
DRAWING NO. C-506
PZ22-12000932
02/25/2026 OF 18